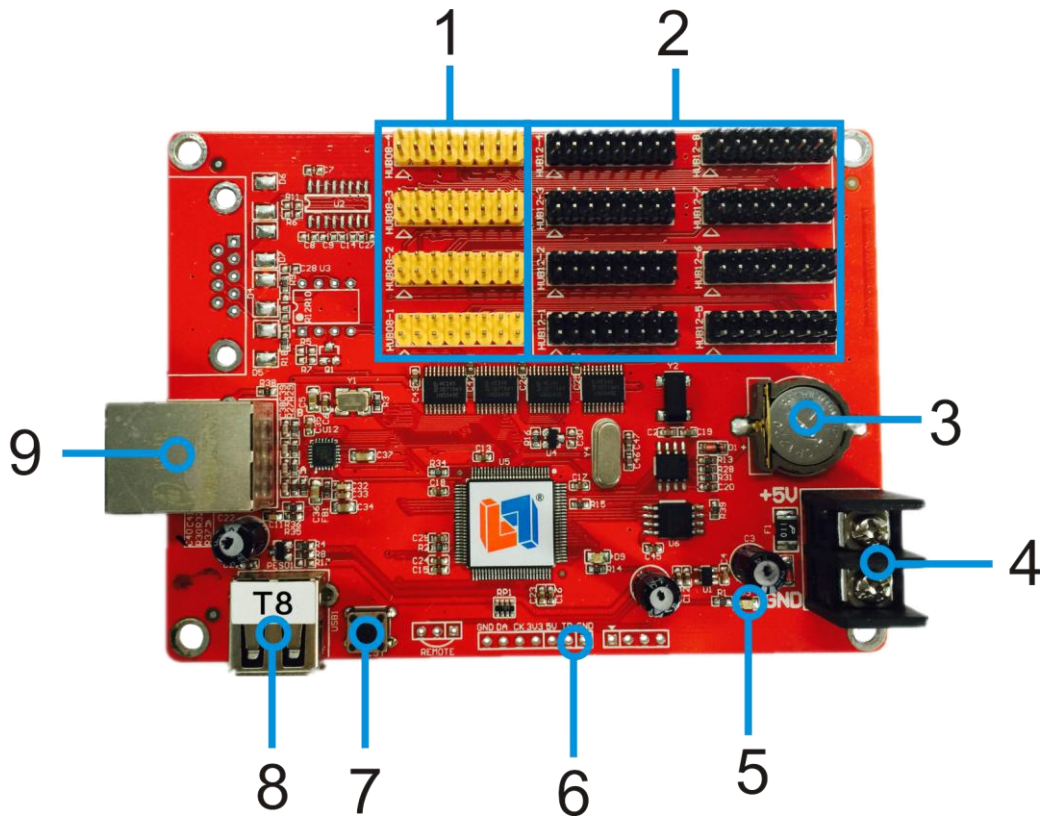


Specification for T8 LED Display Controllers

Version	Date	Reason
V2.00	2015/08/07	创建文档

Hardware:



Number	Interface Name	Description
1	HUB12 Port	Connect HUB12 module
2	HUB08 Port	Connect HUB08 module
3	RTC Button battery	RTC Power,Voltage 3V
4	5V Power Port	Wide voltage input 3.5V-6V
5	5V Power indicator	Indicating power state
6	Sensor port	Connect TEMP sensor
7	Multifunction button	Can support : 1.Test LED panel 2.Restore factory settings
8	USB Port	USB Port
9	Ethernet port	Million ethernet interface

Parameter:

Memory	2MByte
Adaptation	Single color,Double color
Pixels	Single:128K Double:64K
Range	Single:2048*64 1360*96 1024*128 Double:1024*64 512*128
Function	Multi area display/Multi language version
Program NO.	Support 128 program,Each program 16 zones
Area type	Text/Image/Animation/Time/Analog clock/Timer/Temperature/Temperature and humidity
Frame mode	Program Water frame/Area Water frame
Clock	Digital clock/Analog clock/Countup/Countdown
Communication	USB port and million ethernet interface
Display Port	2*HUB08,4*HUB12
Sensor	Temperature Senso
Brightness	16 Level brightness,Automatically adjust the period of time
Remote	Support Timing Switch/Software Switch
Voltage	3.5V~6V
Max Power	<1W
Temperature	-40℃-85℃
Development	DLL
Software	LED Player 6.0

Dimensional drawing:

